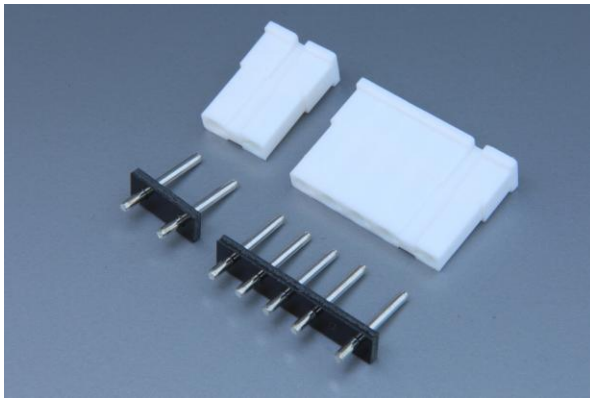


# 1138



## Pitch 7.5-5.0mm Wire to Board Connectors



### PERFORMANCE

Electrical Rating: AC/DC 250V 5A

額定電壓電流

Insulation Resistance: 1000MΩ min.

絕緣阻抗

Withstanding Voltage: 1000V AC/minute

耐電壓

Temperature Range: -25°C~+85°C

適用溫度



### CONNECTOR

Part No.: M11381~M11386

產品編號

Material: Housing: Black Baklite

材質 塑膠座 電木

Contact Pin: Brass, Nickel-plated

接觸針 黃銅 鍍

Suitable Contact: 11381BS-2 11381PS-2

配合端子

Suitable Housing: P11381~P11386

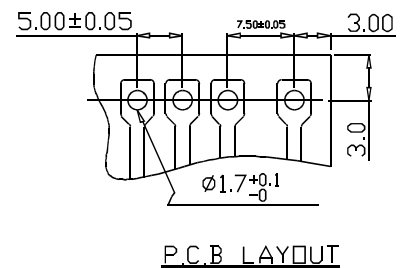
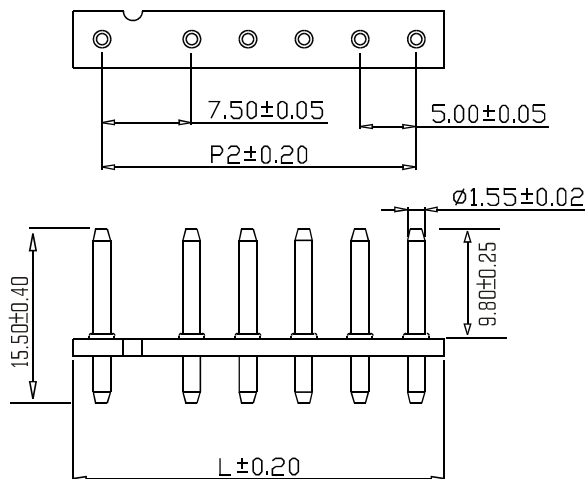
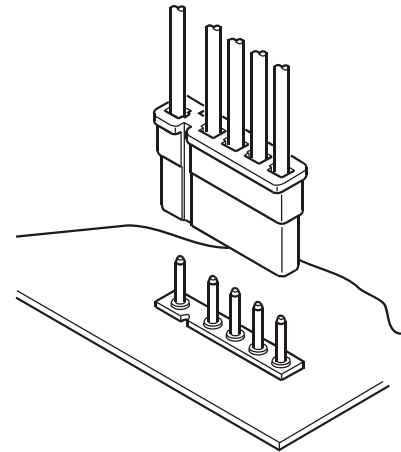
配合塑膠

Acceptable Wire: AWG# 18~24

適用電線

Round Contact Pin: :  $\phi 1.55 \pm 0.02\text{mm}$

圓型



Unit: mm

Part No.	POS.	L	P1	Pack.
M11381	1	6.50		1000
M11382	2	13.00	7.50	1000
M11383	3	18.00	12.50	500
M11384	4	23.00	17.50	500
M11385	5	28.00	22.50	500
M11386	6	33.00	27.50	500

Behave in conformity with continual product development policy, SinSheng (STM) reserves the right of specification changing of contents described in this catalogue at any time and without prior notice. Please contact the sales department nearby for most updated information.  
由於產品持續開發的政策, 信盛(STM)保留隨時變更本目錄所述之規格且不需提前通知的權利。請連繫業務處查詢最新的產品資訊。

# 1138 Wire to Board Connectors

## HOUSING

Part No.: P11381~P11386

產品編號

Material: Nylon 94V-0

材質

Suitable Contact: 11381BS-2 11381PS-2

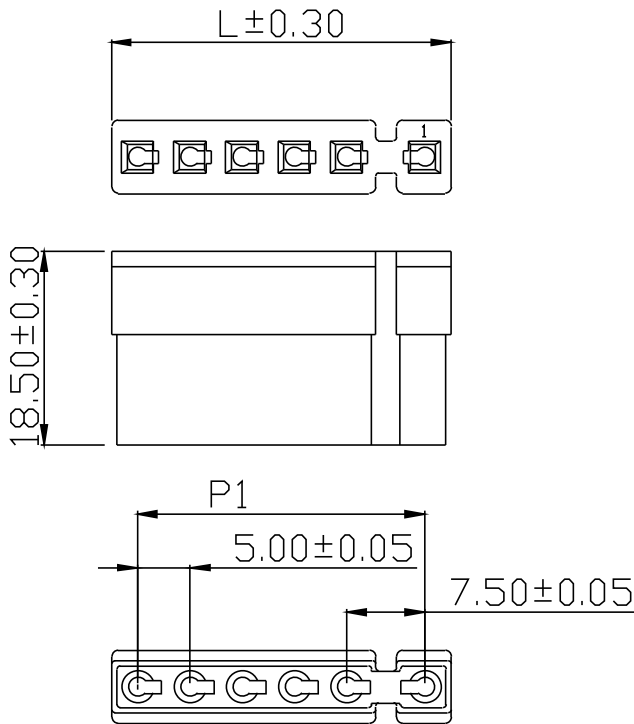
配合端子

Suitable Connector: M1381~M11386

配合公座

Acceptable Wire: AWG# 18~24

適用電線



## PERFORMANCE

Electrical Rating: AC/DC 250V 5A

額定電壓電流

Insulation Resistance: 1000MΩ min.

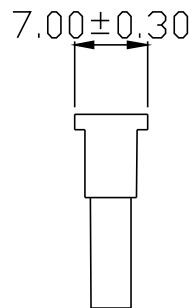
絕緣阻抗

Withstanding Voltage: 1000V AC/minute

耐電壓

Temperature Range: -25°C~+85°C

適用溫度



Unit:mm				
Part No.	POS.	L	P1	Pack.
P11381	1	6.50		1000
P11382	2	12.50	7.50	1000
P11383	3	17.50	12.50	1000
P11384	4	22.50	17.50	500
P11385	5	27.50	22.50	500
P11386	6	32.50	27.50	500

## TERMINAL

Part No.: 11381BS-2 11381PS-2

產品編號

Thickness: 0.25mm

銅板厚度

Material: Brass (BS) Phosphor Bronze (PS)

材質

黃銅

磷青銅

Surface Treatment: Tin-plated

表面處理

鍍錫

Acceptable Wire: AWG# 18~24

適用電線

Insulation O.D.: 1.70~2.10mm

線皮外徑

Suitable Housing: P11381~P11386

配合端子

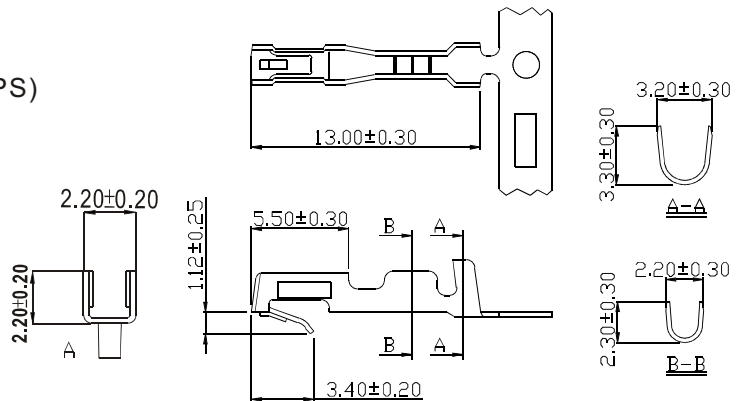
Suitable Connector: M11381~M11386

配合塑膠

Packing: 7,500PCS(Reel)

包裝數量

Side-feed



7.5-5.0mm