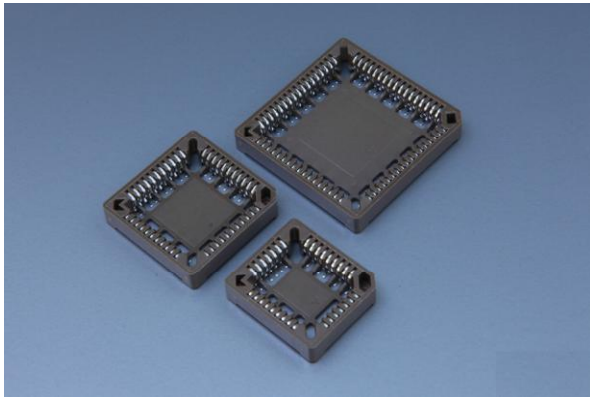


2203



Pitch 1.27mm SMT Type Socket



PERFORMANCE

Insulation Resistance: 1000MΩ min at
額定電壓電流
DC 500V

Withstanding Voltage: 500V AC/minute
耐電壓
Temperature Range: -55°C~+105°C
適用溫度



1.27mm

SOCKET

Part No.: **MS2203P32**

產品編號

Material: Housing: PPS 94V-0

材質

塑膠座

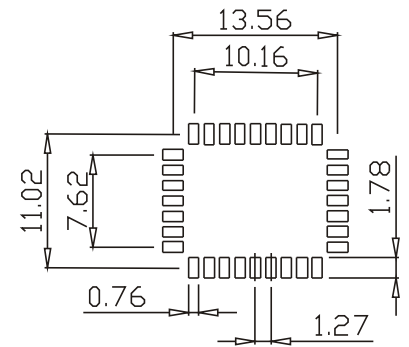
Contact Pin: P.B, Tin-plated

接觸針

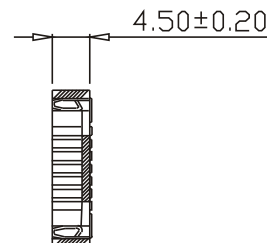
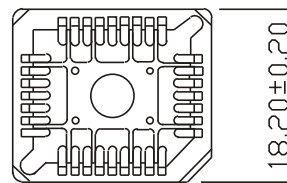
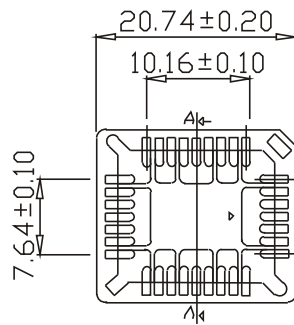
磷青銅, 鍍錫

Packing: 25PCS(Tube)

包裝數量



P.C.B LAYOUT



SECTION A-A

Behave in conformity with continual product development policy, SinSheng (STM) reserves the right of specification changing of contents described in this catalogue at any time and without prior notice. Please contact the sales department nearby for most updated information.
由於產品持續開發的政策, 信盛(STM)保留隨時變更本目錄所述之規格且不需提前通知的權利。請連繫業務處查詢最新的產品資訊。